

# Witherslack, Meathop and Ulpha

## Parish Plan 2015-2017



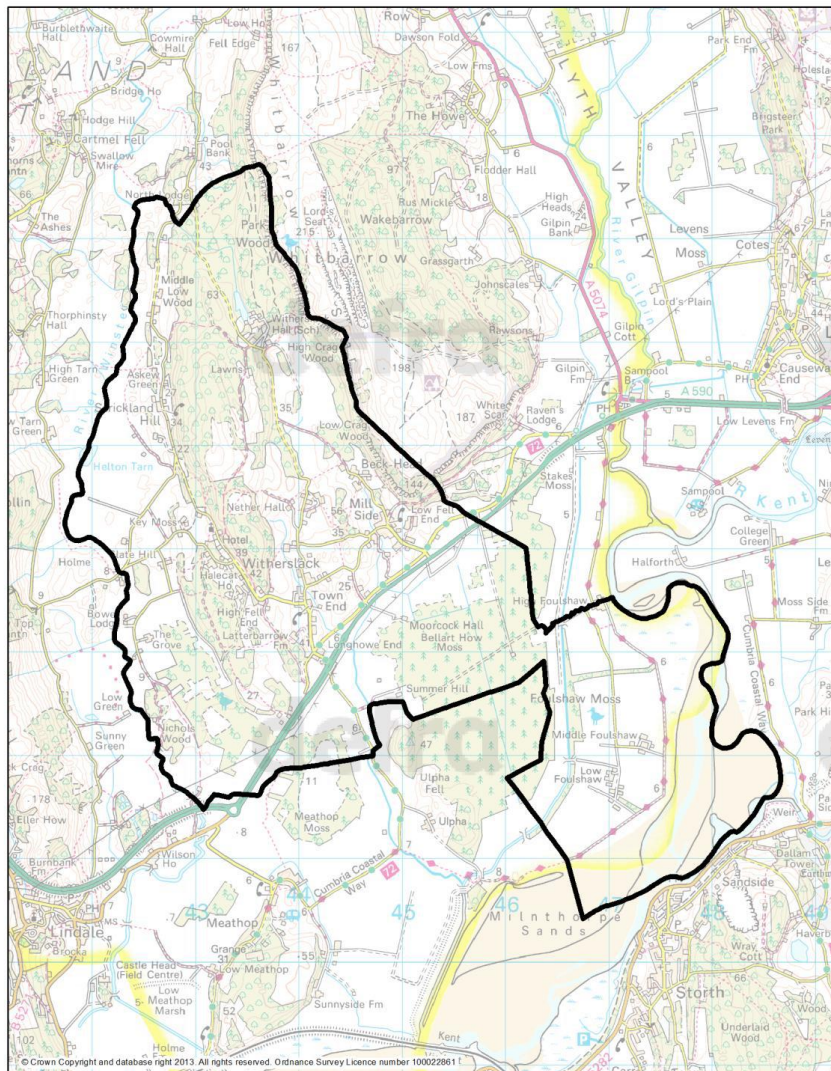
Witherslack Meathop and Ulpha Parish Council

*“A beautiful, safe and sustainable Cumbrian  
Parish”*

**Witherslack, Meathop and Ulpha is a small and beautiful parish in the south of Cumbria, on the edge of the Lake District National Park.**

There are approximately 190 households and 500 residents. There are 90 young people, 85 people aged over 65 years old, 325 working-age people and 15 people from ethnic minority groups, 17 people are benefit claimants and 25 people have a disability or life-limiting condition. Crime is low and satisfaction with the local area is very high. There are 258 economically active residents, 20% of the community is self-employed and there are 50 people working at home. There are a number of remaining full-time farms. Education levels are high and 25% of the economically active work in professional occupations. House prices are higher than the national average. Witherslack has a village hall, community shop, schools and a church. The landscape is predominantly low lying grasslands and fell under 300m, with some woodland and coppice areas and a number of tarns. There are a number of rural roads that can become busy with visitors and cyclists. The busy A590 runs through the centre of the parish and presents a number of road safety issues to the community. Public transport is limited but there is a reasonable bus service from Kendal to Barrow that stops on the A590, and a Grange service. 97% of households have a car. A number of footpaths and bridleways cross the parish.

**Witherslack Parish**



Source: 2011 Census Output Area boundaries. Crown Copyright  
Crown Copyright material is reproduced with the permission of the controller of HMSO  
Produced by Oxford Consultants for Social Inclusion, www.ocsii.co.uk, April 2013

## Parish Improvement Plan 2015-17

<b>Infrastructure:</b>	
<b>Issue</b>	<b>Action</b>
<p><b>Highways:</b> To contribute to work to improve the safety of the A590</p> <p><b>Local Roads:</b>            Pot holes            Winter gritting            Speeding            White lines            Parking            Traffic Management</p>	<p>To continue to work with the Highways Agency and local working groups with a view to reducing the number and frequency of fatal and serious accidents on the A590.            Council will attend quarterly meetings.</p> <p>To report potholes in the parish to the County Council for action.</p> <p>To continue to support the local winter gritting scheme</p> <p>To consider the opportunity for a “20” speed limit in Witherslack Village.</p> <p>Removal of ambiguity of priority white lines.</p> <p>To monitor parking issues in the village and report any ongoing issues to Cumbria Police.</p> <p>To report traffic issues to Cumbria County Council (such as line painting, safety signs etc)</p>
<b>Broadband</b>	To work with the Connecting Cumbria project improve the quality of broadband in the Parish
<p><b>Planning Issues</b>            Affordable Housing            Sustainable development            Traditional industry            Countryside Access</p>	<p>To work with the LDNPA as the Planning Authority to maintain the quiet, rural Lake District environment of the Witherslack community.</p> <p>To support the development of affordable homes for local residents and the work of the Witherslack Community Land Trust.</p> <p>To support the sustainable development of local businesses where there is not an adverse impact on the local environment.            To support the work of the Witherslack Community Shop.</p> <p>To support traditional industries such as farming and forestry in sustainable development where there is not an adverse impact on the community.</p> <p>To support projects that improve access to Witherslack on foot, bicycle or on horseback.</p>

<b>Public transport</b>	<p>To ensure that there is access to and from Witherslack via public transport.</p> <p>To maintain the bus shelters provided by the Parish Council</p>
<b>Utilities:</b>	<p>To monitor supply issues in the parish and to report issues to Electricity North West</p> <p>To work with partners to resolve water management issues</p> <p>To monitor developments with the drainage board.</p>
<b>Access to Services</b>	
Local access to Health, Midwifery, Education, Shops, Post Office and Council Services.	<p>To strive to protect and where possible increase access to services for the community.</p> <p>To encourage access to education for all ages in the parish.</p>
Witherslack Parish Hall	To support the future development of the hall, to ensure that there is a community venue for future generations.
At Paul's Church	Support the future development of the church.
Communications	<p>To improve communication regarding activity and events in the Parish via the website <a href="http://www.witherslack.org">www.witherslack.org</a></p> <p>Publicise the website and put meeting updates in the Parish News.</p> <p>To ensure that the community are given every opportunity to give feedback to the parish council via contact with Members, through the website or by attending meetings/</p>
Police and Crime Prevention Services	To work with the local policing team, Kendal Rural West to maintain the safe environment in the parish
<b>Grant Scheme</b>	To administer a Parish Grant Scheme to improve the social, economic and health well-being of the community.
<b>Parish land</b>	<p>To develop a management plan for the parish land, to ensure it is safeguarded for future communities. All plots are registered and the council is in the process of leasing suitable ones.</p> <p>To consider if the parish land can improve access to recreational facilities for the community.</p>